

**PUBLIC AND CULTURAL**



**SAOTA**



# GLOBAL REGIONS



SAOTA has a global footprint with projects across six continents.

With projects underway in multiple cities across the globe, the studio has the well developed systems and tools in place to work remotely.



# COMPANY PROFILE

SAOTA, a leading firm of architects, is driven by the dynamic combination of Stefan Antoni, Philip Olmesdahl, Greg Truen, Phillippe Fouché, Mark Bullivant, Roxanne Kaye, Logen Gordon, Dani Reimers and Dominik George who share a potent vision easily distinguished in their practices.

This, paired with both an innovative and dedicated approach to the design, documentation and execution of projects globally, has seen SAOTA become an internationally sought-after brand.

SAOTA has a global footprint with projects on six continents. We have a clear understanding of the place of design in the world and how to deliver architectural projects in diverse markets.

This success is driven by a design philosophy that connects function and form, and the pursuit of true architectural

design to create appropriate solutions. The focus on achieving maximum value has also led to global invitations to design, build and create highly prestigious projects.

The philosophy of practice is embodied in the spirit of enquiry that flourishes amongst its staff. This spirit not only guides the firm, but enables it to maintain its position as definitive designers in a highly competitive and fast-changing industry. Increased exposure to the global marketplace has seen SAOTA flourish as cities and contexts allow for infinite inspiration which can be seen radiating from the approach to design.

SAOTA is also focused on using the most current computer technology in its design process, both to understand the design and to communicate the design to our clients. To this end we are world leaders in the use of Revit and have also developed virtual reality tools for use in our process.

***“We strive to promote a service marked by excellence both in our buildings and in addressing the needs of our clients, with the focus on high standards & elegance.”***





# PUBLIC AND CULTURAL

## ACADEMY OF EXCELLENCE

Lagos Nigeria

The Academy of Excellence (AOE) is an educational institution for a respected financial corporation located in Lagos, Nigeria, where employees of all experience levels are brought together on one campus to receive training and skills development.

The idea was to create a world-class institution in the form of an academic “village”. The design aims to embody the culture and values of the bank, as well as bringing together students and their lecturers in a residential campus. The wider vision is that this academy is embedded into the social and cultural fabric of the city becoming a wider resource for art and critical debate.

The site is located next to the main entrance of a larger precinct development. This frenetic and highly visible setting is reflected in memorable and expressive architecture. The Academy rises gently up off the street to form a distinct realm elevated above the daily grind. Planting and shade characterise this raised plinth which acts as a “public square”, above the centralized parking & services below.

Locally sourced materials and labour will be used to promote the local economy and the culturally rich communities surrounding the development. The architecture itself is conceived as a language drawn from the diverse textiles, patterns and colours found in Lagos.



SAOTA



PUBLIC AND CULTURAL

**UCT NEB**  
Cape Town South Africa

SATA



# PUBLIC AND CULTURAL

## UCT NEB

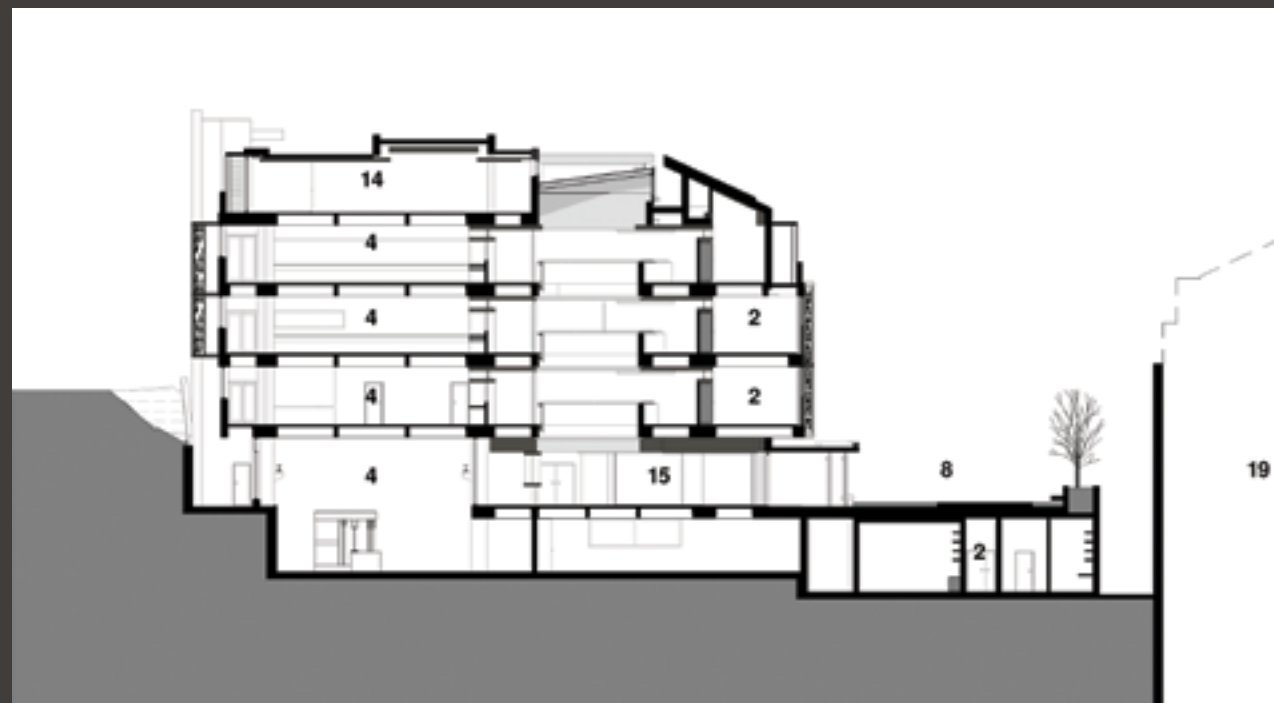
Cape Town South Africa

After we completed the New Engineering Building (NEB), we were asked to design The Learning Building on the same site situated on University of Cape Town's Upper Campus.

The Snape Building which used to be occupied by civil engineering was demolished to make way for a new Teaching and Learning Building (TLB). Construction of this new building, which will house the Department of Construction Economics and Management (CEM) and will include nine multifunctional lecture theatres, a micro-lab, and a satellite campus of the Library Knowledge Commons, started in 2013.

The civil engineering laboratories as well as a new, spacious teaching laboratory will be housed in the basement of the building. Civil Engineering staff and postgraduate students occupy the offices in the south end of the NEB.

The main additions to the faculty are the state-of-the-art lecture theatres (which will be part of the TLB), more space for the Departments of Chemical Engineering and the School of Architecture, Planning and Geomatics (through the move of CEM), and a dedicated Surface Science laboratory (for the electron microscopes) shared between three faculties and situated between the two larger buildings.





# PUBLIC AND CULTURAL



**NMMU**  
Port Elizabeth South Africa

SAOTA



# PUBLIC AND CULTURAL

## NMMU

Port Elizabeth South Africa

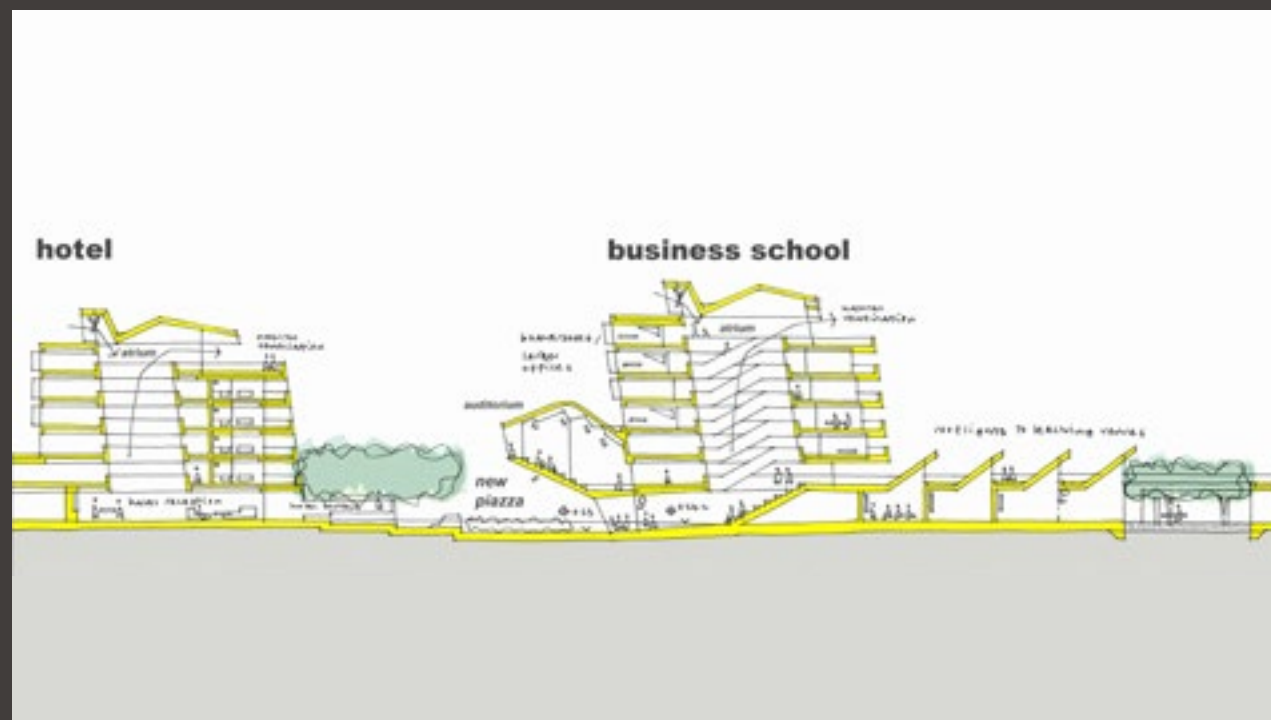
Nelson Mandela Metropolitan University is the largest Higher Education institution in the Eastern and Southern Cape with an enrolment of 27 000 students located over six different campuses.

The proposed Business School is located on a prominent site within an existing campus in the centre of Port Elizabeth. The Business School provides 4,500m<sup>2</sup> of accommodation, including auditoria, lecture venues and syndicate rooms; classrooms, multi-media facilities and departmental offices.

The design of the Business School focuses on the visual and physical integration with the existing campus.

Vehicular access and circulation patterns have been carefully developed to enhance the extent and quality of the pedestrian realm. The proposed buildings frame and punctuate the landscaped spaces whilst providing shelter from prevailing winds. The architectural response places emphasis on the visual and material contrast of adaptable, flexible learning spaces with functionally specific venues.

The proposal aims to be environmentally responsible through the use of shaded façades, the collection of solar and wind energy sources, water retention and recycling and though natural ventilation of internal spaces.



SAOTIA



**PUBLIC AND CULTURAL**



**FIRST ACADEMY**  
Lagos Nigeria



# PUBLIC AND CULTURAL

## FIRST ACADEMY

Lagos Nigeria

This high rise multi-residential and mixed-use building has a distinctive silhouette. The form of the building has striking glass and aluminium-clad façade and is made up of a two-principle building - the twenty-level Apex Tower and the Garden Court.

The development comprises a hundred one, two- and three-bedroom apartments, the two- and three-bedroom apartments each feature a private balcony.

The tower also boasts a communal viewing gallery with an aspect pointing towards Central London's iconic skyline.

Located in Ealing, the West London neighbourhood, which is often referred to as the "Queen of the Suburbs" and has countryside charm. Today the district is alive with an eclectic mix of international cuisine, restaurants, bars, street cafes, shopping centres and galleries.

Together with fantastic transport links connecting the town centre to Central London, Ealing continues to attract residents seeking all the advantages of London living.





**PUBLIC AND CULTURAL**



**MANKGAILE PRIMARY SCHOOL**

Limpopo South Africa

SAOTA



# PUBLIC AND CULTURAL

## MANKGAILE PRIMARY SCHOOL

Limpopo South Africa

The site is on a commanding position overlooking the village. Being the most important building in the village and as it will be used as the village community centre, place of gathering and functions and sporting events it was felt that the building needed to have a presence and a stature for the community.

A formal and symmetrical arrangement was felt to be most appropriate to reinforce this aspect.

The school is arranged along a rear spine acting virtually as a street connecting the centre public square or Forum and the two outer classroom courtyards.

The main entrance is through gates on the Southern end of the spine. Being double volume in height with portions permitting filtered light it provides for a certain air of drama. The Forum forms the centre and heart of the school and opens onto the grand veranda and covered loggia walkway overlooking the sports field.

The colonnade is made up of steel posts with a pergola of latte providing shade in the afternoons and together with the filtered light forms a very light and permeable layer to the heavier and solid building behind. Toilets are positioned to allow for easy access for school or non-school events.





# PUBLIC AND CULTURAL

**NEB TLB**

Cape Town South Africa

SAOTA



# PUBLIC AND CULTURAL

## NEB TLB

Cape Town South Africa

After we completed the New Engineering Building, we were asked to design The Learning Building on the same site situated on University of Cape Town's Upper Campus.

The Snape Building which used to be occupied by civil engineering was demolished to make way for a new Teaching and Learning Building (TLB). Construction of this new building, which will house the Department of Construction Economics and Management (CEM) and will include nine multifunctional lecture theatres, a micro-lab, and a satellite campus of the Library Knowledge Commons, started in 2013.

The civil engineering laboratories as well as a new, spacious teaching laboratory will be housed in the basement of the building. Civil Engineering staff and postgraduate students occupy the offices in the south end of the NEB.

The main gains to the faculty are the state-of-the-art lecture theatres (which will be part of the TLB), more space for the Departments of Chemical Engineering and the School of Architecture, Planning and Geomatics (through the move of CEM), and a dedicated Surface Science laboratory (for the electron microscopes) shared between three faculties and situated between the two larger buildings.



SAOTA



# PUBLIC AND CULTURAL

## MZAMOMTSHA

Cape Town South Africa

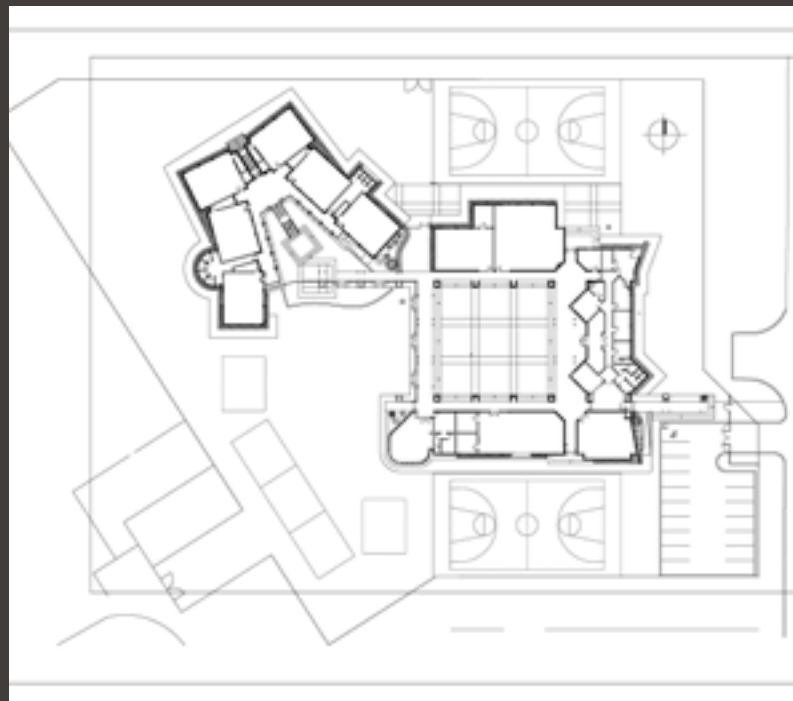
The Mzamomtsha Primary School provides facilities in an impoverished and marginalized area on the Cape Flats. The school has sports fields, a library, specialist classrooms and a computer room. The Mzamomtsha project is a fresh take on the relationship built between a community and their school building.

Located in Driftsands, it branches out and improves on the design brief and style of schools which was previously dictated by the Department of Education and Training in Pretoria.

The project was split into three distinct elements: those that belong to the children, those that relate to the administration of

the school and those that the community can partly stake claim to. This third group comprises; the Computer Room, the Library, the Forum and a physical training slab (fitted as a basketball court), and was positioned closest to the entrance to the site.

Through the Internet and the library these facilities provide a link to the outside world representing a powerful resource for adult education, and creates a venue for community meetings, sports events, fêtes etc.





# PUBLIC AND CULTURAL

## PARKWOOD LIBRARY

Cape Town South Africa

with a view to becoming a partner in providing some form of social service in a deprived community in the Western Cape. Primedia was particularly interested in the education sector, and primary level education especially.

On consulting various structural engineers, our conclusion was that the use of concrete panels in lieu of brickwork was the more technically savvy and cost-effective solution. The engineering would comprise cast in-situ panels that could be "folded" into position on site.

An extra benefit was that this would provide some jobs for local people during the quick - week-long - installation. The Parkwood Primary project has already received

recognition in the form of the FIRST FIX 2009 Best Use of Autodesk Revit BIM Technology prize.

The goal of placing an intervention like this in Parkwood is to make it easier for children to have access to functional, visual, digital and media literacy, an environment of cultural and reader development and lifelong learning, and creative programmes during their leisure time.

It is hoped this will lead to more activities being taken up by childcare givers and parents to encourage their children to be confident in their search for knowledge



SAOTA



# SPECIAL CAPABILITIES

## DESIGN

Our architectural designers are highly skilled and experienced, allowing schemes to be conceptualised in dynamic, yet legible presentations. The design process can therefore develop swiftly with the precise method of achieving objectives and testing the solutions comprehensively. SAOTA have done a substantial amount of projects abroad and have skills in achieving the project requirements set. The design architects are backed up by an advanced computer aided drawing office capable of detailed 3D analysis and presentation.

## TECHNICAL

The office has developed advanced technical skills related to, i) Construction Detailing, ii) Building Services and iii) Contract Administration of projects. Further, in working on projects abroad the office has had experience with multi-disciplinary project teams made up of consultants from companies from various countries.

## SYSTEMS

SAOTA have developed advanced systems for co-ordination of the projects across all stages of the architects service. This ensures that client presentations, design reviews, Technical Documentation, Tendering and Contract Administration are managed to the highest quality standards.

SAOTA also uses REVIT, the leading Building Information Modelling (BIM) software available allowing us to develop and document a building in a 3 dimensional environment. Any changes are immediately co-ordinated through the entire documentation package. It also gives us unprecedented control over the co-ordination of structure and services when working with consultants using the same platform.

Lumion is used as an architectural visualization tool which allows us to build a 3D environment and create images of each project. Furthermore impressive video presentations and live walkthroughs are created.

Together with Tenebris Lab Director, Gerard Slee, SAOTA developed LUX Walker, a software enabling designers and clients to experience their designs in virtual reality. It's a workflow tool that renders a realistic, true-to-life scale representation of a 3D model that clients can easily interact with.





# AWARD WINNING DESIGN FIRM



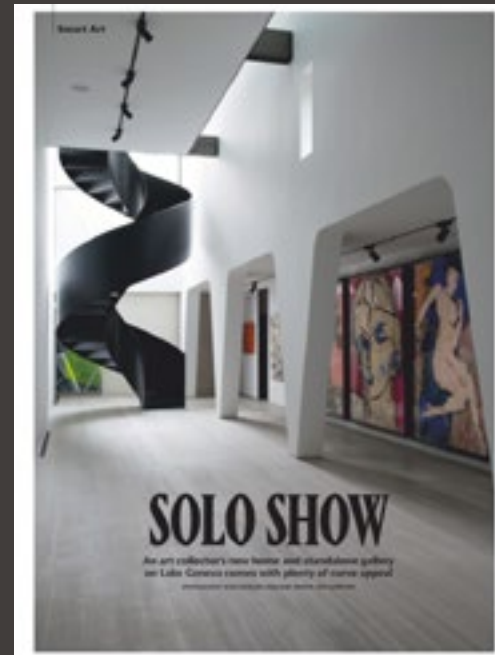
Architizer A+ Awards



SAOTA



# EXCLUSIVE MEDIA COVERAGE



341K



77K



29K



4.8K

SAOTA



# MEET THE TEAM

## PRINCIPALS



Stefan Antoni



Greg Truen



Philip Olmesdahl



Phillippe Fouche



Mark Bullivant



Roxanne Kaye



Danielle Reimers



Dominik George



Logen Gordon

## SENIOR ASSOCIATES



Philip Bartman



Kerian Robertson



Conrad Martin



Edward Peinke



Bobby Hugill



Pierre Du Plessis



Erin Gibbs



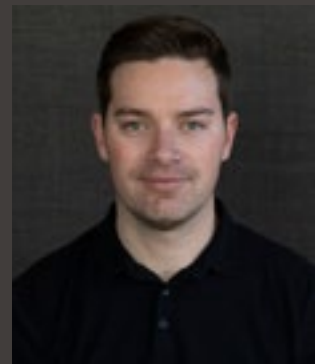
Brigitte Stevens



Riaan Steenkamp

## ASSOCIATES

## JUNIOR ASSOCIATES



Danny Bester



Yolande Kluthe



Alwyn de Vos



Lizaan Alberts



Peter Harel



Tasneem Jauch



Eugene Olivier



Cindy Mati



